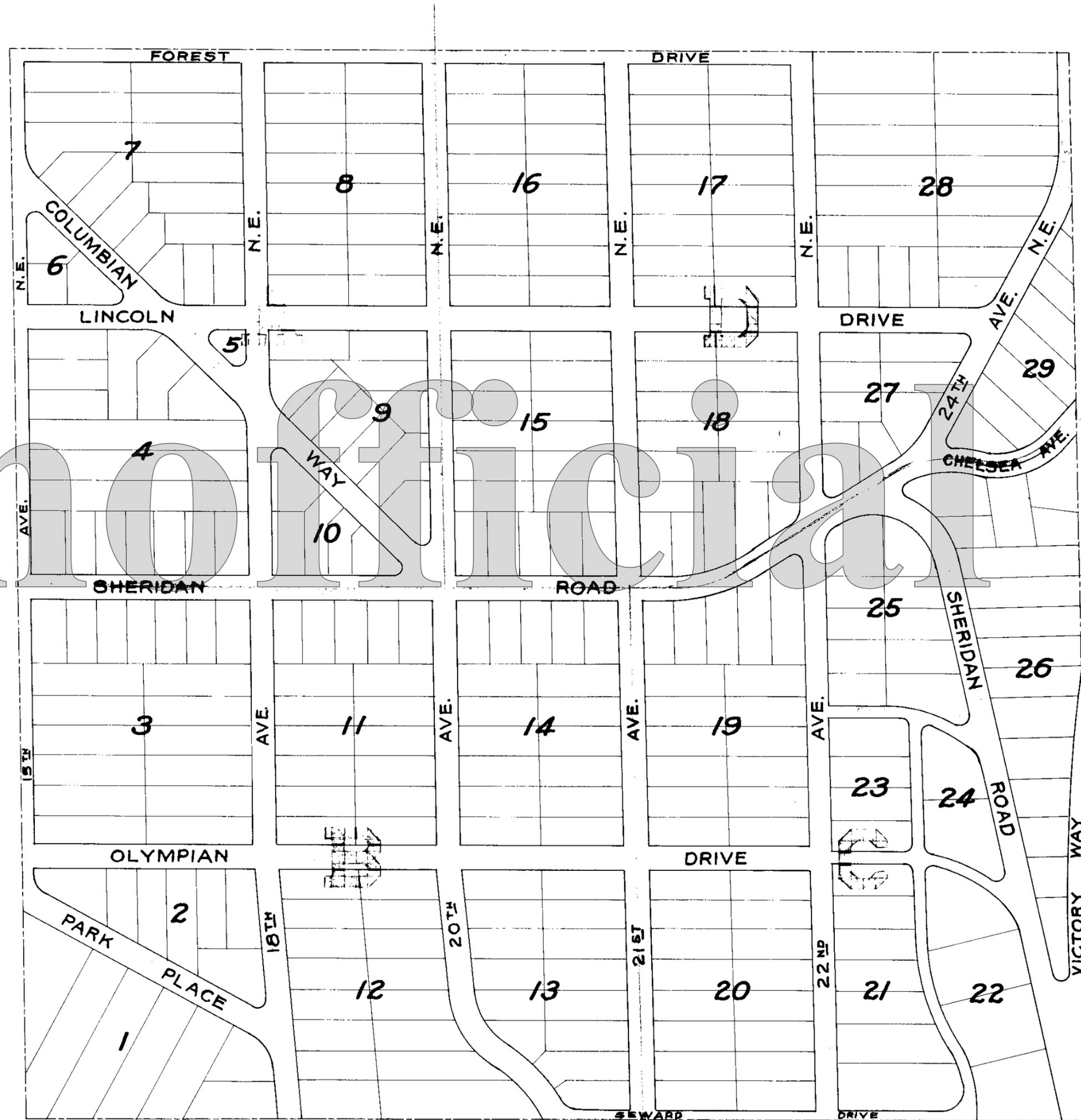


VICTORY HEIGHTS

KING COUNTY, WASHINGTON

KEY MAP

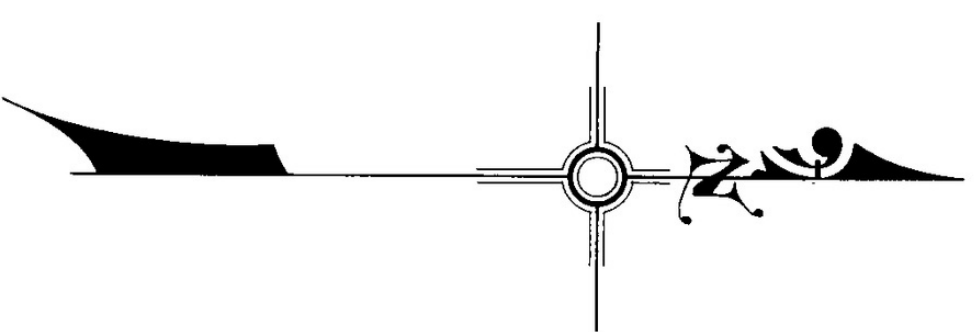


VICTORY HEIGHTS

KING COUNTY, WASHINGTON

Carl A. Reeves and Parker, Gould & Co.
Civil Engineers.

Scale: 1" = 100'



DESCRIPTION

This plat of Victory Heights to King County, Washington, comprises all of the Southwest Quarter (SW 1/4) of Section Twenty-eight (28) Township Twenty-six (26) North of Range Four (4) East of the Willamette Meridian, except county roads.

We hereby certify that this plat of Victory Heights is based on an actual survey of the land described, that the courses and distances shown thereon are correct; that the monuments have been set and the lot and block corners staked on the ground.

Carl H. Reeves
Parker-Gould & Co.
by I. C. Parker

DEDICATION

Know all men by these presents, that we the Goodwin Real Estate Company, Incorporated, owners in fee simple of the land hereby platted, and the Squire Investment Company, each a corporation organized and existing under the laws of the State of Washington and having its principal place of business at Seattle, Washington, hereby declare this plat and dedicate to the use of the public forever all streets, avenues and roadways shown hereon and the use thereof for any and all public purposes, also the right to make all necessary right-of-way easements and fill upon the lots shown on this plat in the reasonable original grading of all the streets, avenues and roadways shown hereon.

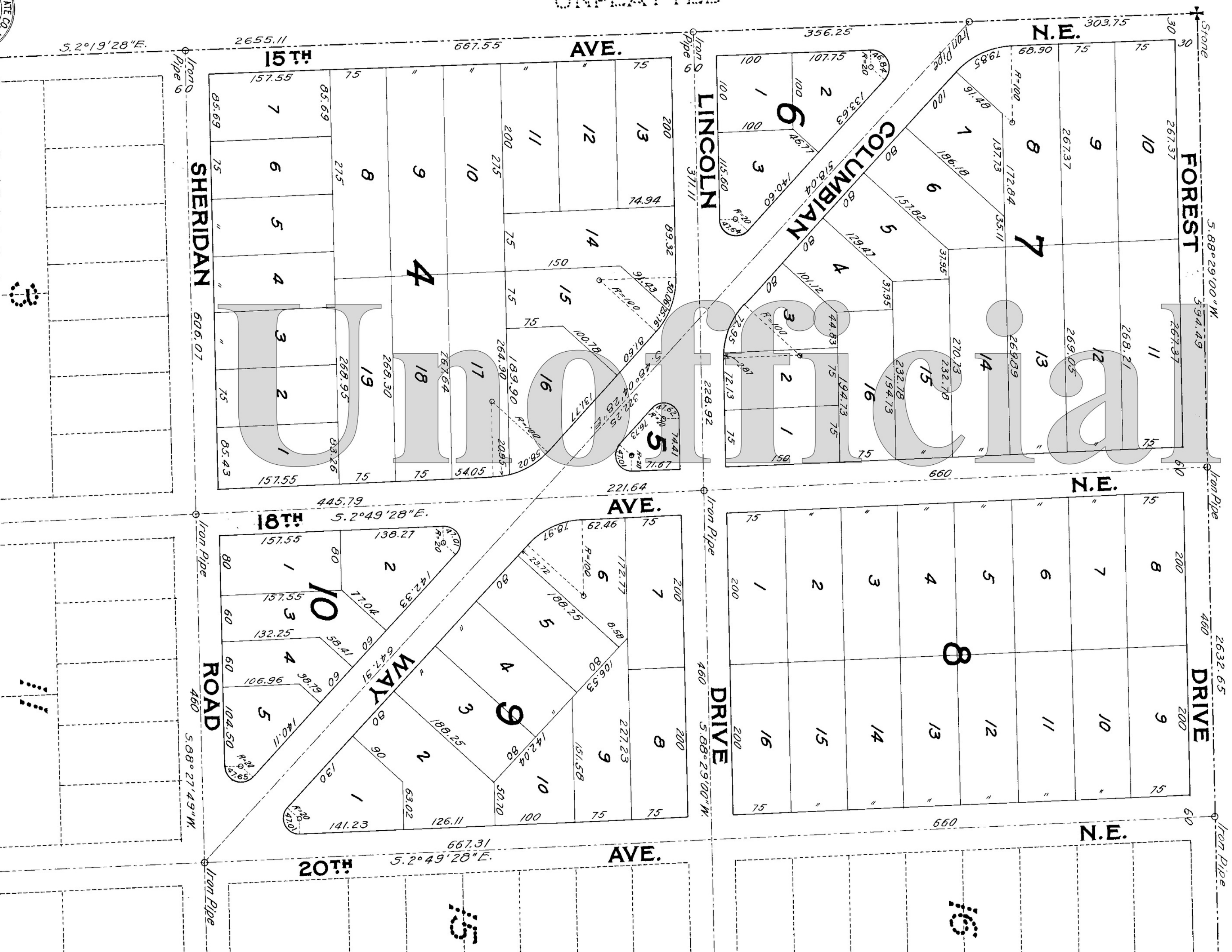
In witness whereof we have hereunto set our hands and seals this 24th day of February, A.D. 1920.

Squire Investment Co.

Watson C. Squire
President
Louis A. Parshall
Secretary



UNPLATTED



Goodwin Real Estate Co., Inc.
F. S. Goodwin President
Arthur E. Goodwin Secretary

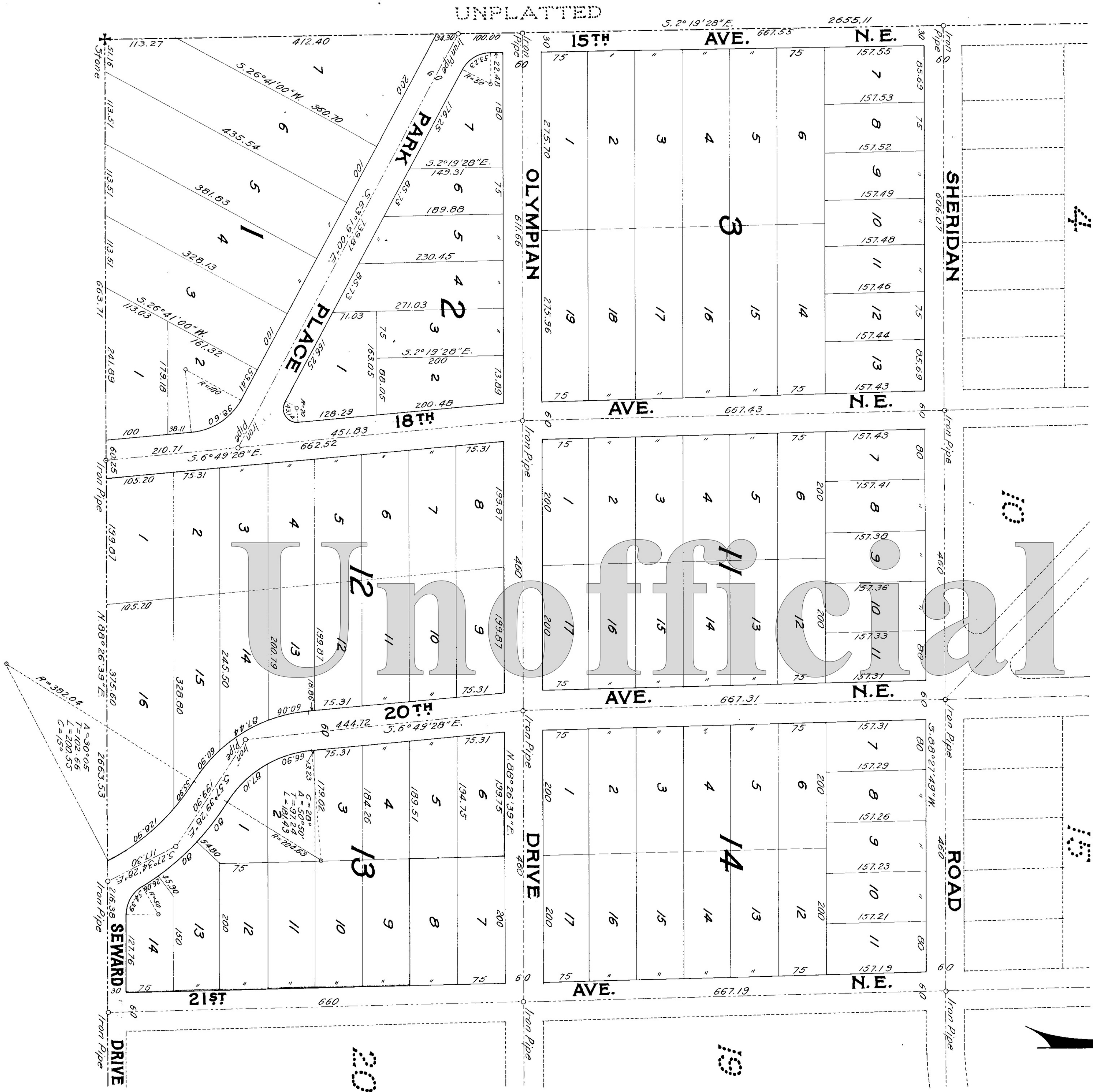
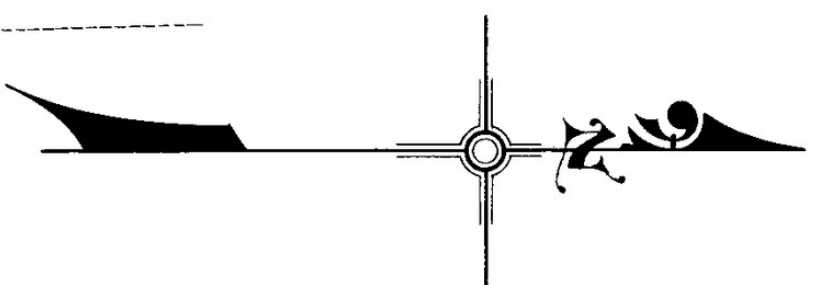


VICTORY HEIGHTS

KING COUNTY, WASHINGTON

Scale: 1" = 100'

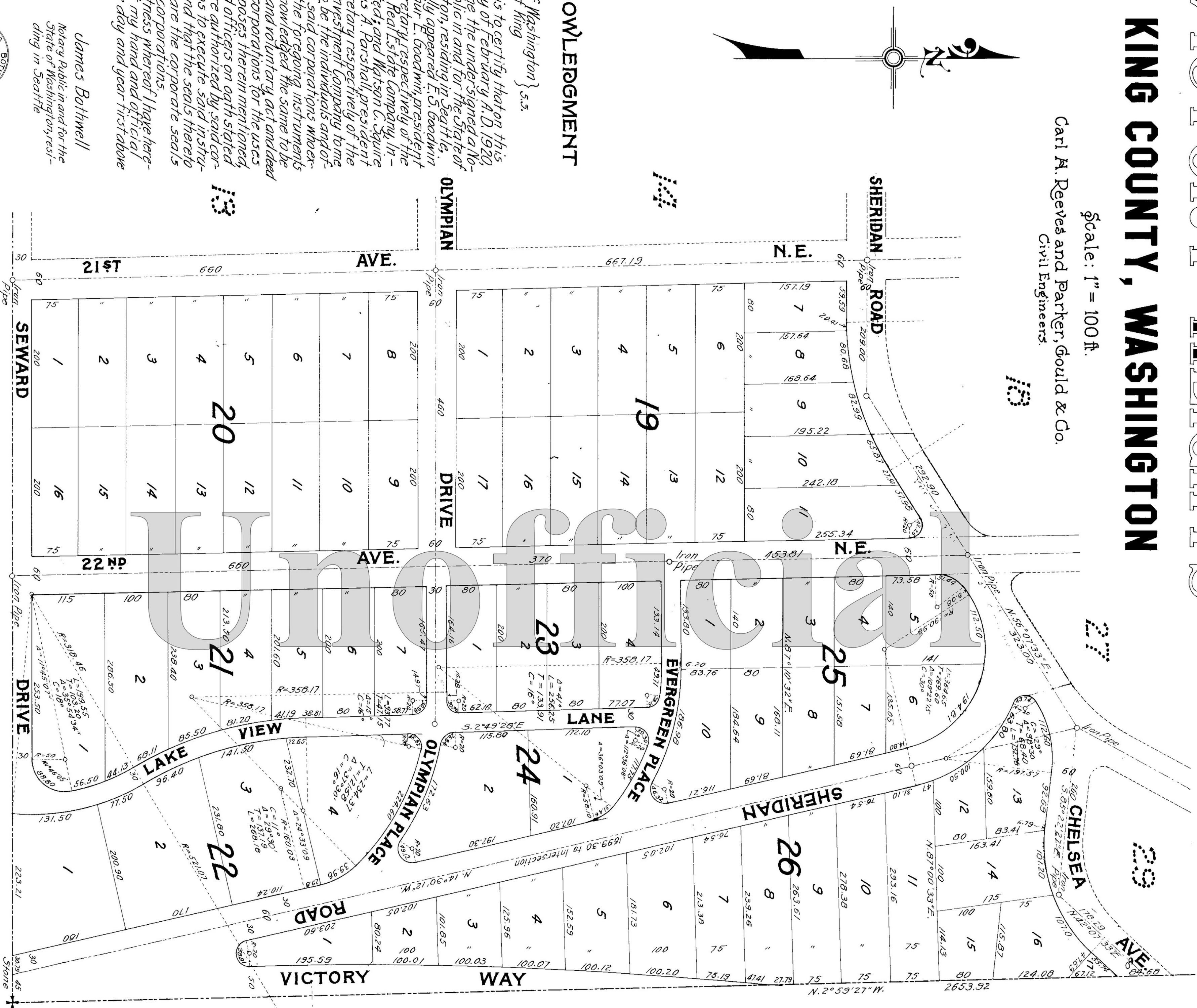
Carl H. Reeves and Parker, Gould & Co.
Civil Engineers.



KING COUNTY, WASHINGTON

Carl A. Reeves and Parker, Gould & Co.
Civil Engineers.

Scale: 1" = 100 ft.



ACKNOWLEDGMENT

State of Washington } s.s.
County of King

This is to certify that on this 24th day of February A.D. 1920, before me the undersigned a Notary Public in and for the State of Washington, residing in Seattle, personally appeared E. S. Goodwin and Arthur E. Goodwin, president and secretary respectively of the Goodwin Real Estate Company, Incorporated, and Watson C. Squire and Louis A. Parshall, president and secretary respectively of the Squire Investment Company to me known to be the individuals and officers of said corporations who executed the foregoing instruments and acknowledged the same to be the free and voluntary act and deed of said corporations for the uses and purposes therein mentioned, and said officers on oath stated they were authorized by said corporations to execute said instruments and that the seals thereto affixed are the corporate seals of said corporations.

In witness whereof I have hereunto set my hand and official seal the day and year first above written.

James Bothwell

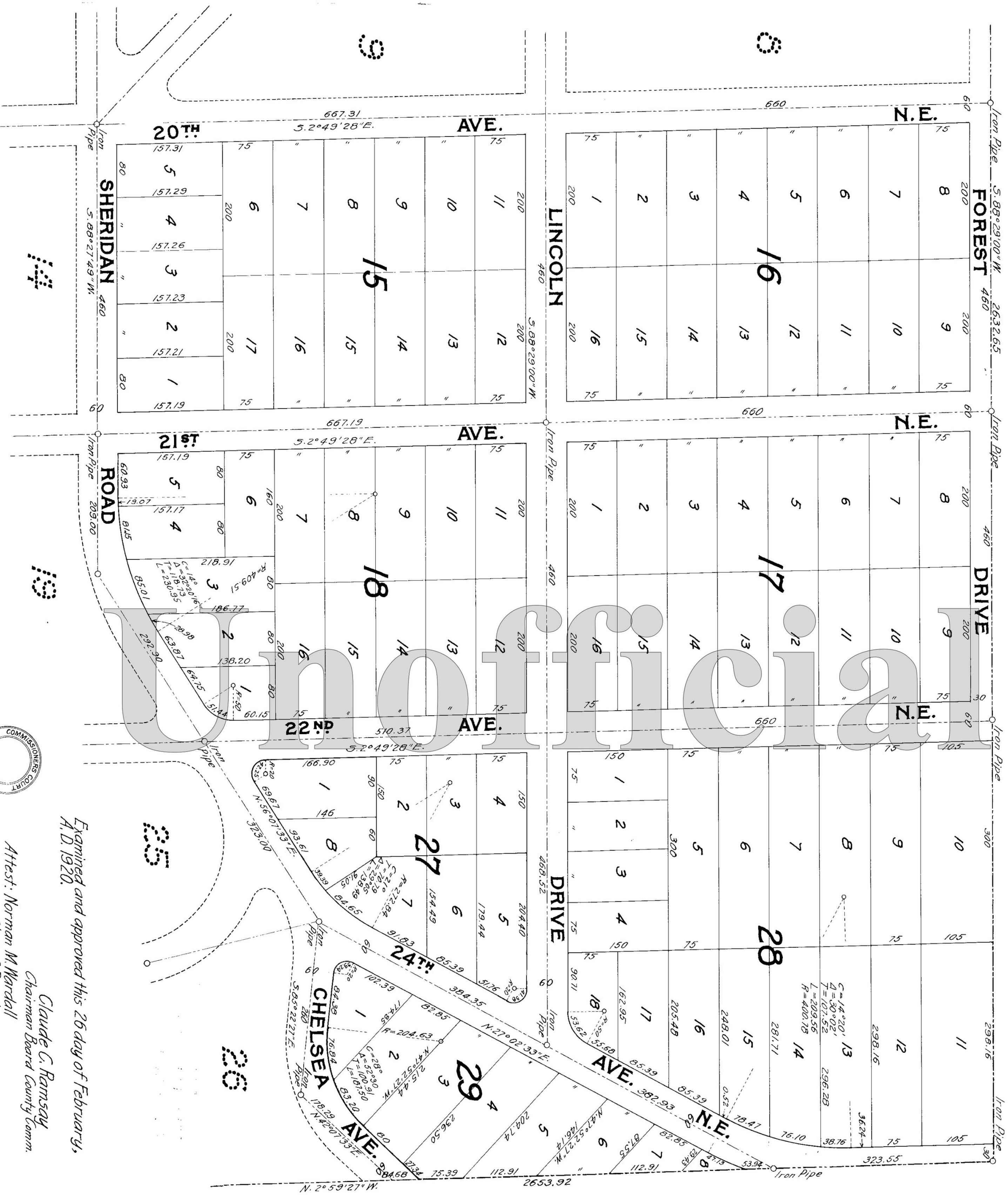
Notary Public in and for the State of Washington, residing in Seattle



VICTORY HEIGHTS

KING COUNTY, WASHINGTON

Scale: 1" = 100'
Carl A. Reeves and Parker, Gould & Co.
Civil Engineers.



Examined and approved this 26 day of February, A.D. 1920.

Claude C. Ramsay
Chairman Board County Comm.
Attest: Norman M. Wardall
Clerk of Board
Per P.P. Bliss
Deputy

Examined and approved this 26th day of February, A. D. 1920.

by Carl E. Morford
Deputy

Samuel J. Humes
County Engineer

1394627

A. G. Simmer,
Draftsman

Filed for record at the request of the County Engineer at 12 min. past 4 P.M. this 26 day of February A.D. 1920 and recorded in Volume 24 of Plats, page 22 records of King County, Washington.

by Norman M. Wardall
County Auditor
Deputy