

RESOLUTION NO. 2825

A RESOLUTION OF THE CITY COUNCIL OF THE CITY OF BONNEY LAKE, PIERCE COUNTY, WASHINGTON, AUTHORIZING AMENDMENTS 1 AND AMENDMENT 2 TO THE PROFESSIONAL SERVICES AGREEMENT WITH KPG FOR SERVICES TO COMPLETE FINAL DESIGN OF THE SR410 SEWER BOTTLENECK PHASE 2 PROJECT.

WHEREAS, Council passed Resolution No. 2786 on the 8th of October 2019 authorizing KPG Consultants to complete the final design the SR410 Sewer Bottleneck Phase 2 project; and

WHEREAS, Staff identified that the existing pedestrian signal system at the intersection of 192nd Ave did not meet the current ADA standard requirements; and

WHEREAS, KPG Engineering has submitted amendment 1 to their current contract to complete the design requirements for the replacement of the pedestrian signal system as part of the project's final design in the amount of \$7,011.00; and

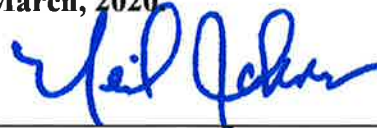
WHEREAS, Staff have planned to improve the storm drainage along SR410, east of 195th Ave, in 2020; and

WHEREAS, KPG Engineering has submitted amendment 2 to their current contract to complete the design for improving the storm drainage system along SR410 in the amount of \$21,102.00; and

NOW THEREFORE, BE IT RESOLVED that the City Council of the City of Bonney Lake does hereby give authorization to include amendment 1 to the current contract with KPG Consultants in the amount of \$7,011.00; and

NOW THEREFORE, BE IT FURTHER RESOLVED that the City Council of the City of Bonney Lake does hereby give authorization to include amendment 2 to the current contract with KPG Consultants in the amount of \$21,102.00; and

Passed by the City Council this 24th day of March, 2020



Neil Johnson, Jr., Mayor

AUTHENTICATED:



Harwood T. Edvalson, City Clerk

**City of Bonney Lake, Washington
City Council Agenda Bill (AB)**

Department/Staff Contact: PS / Doug Budzynski	Meeting/Workshop Date: 24 March 2020	Agenda Bill Number: AB20-38
Agenda Item Type: Resolution	Ordinance/Resolution Number: 2825	Sponsor:

Agenda Subject: Authorize amendments 1 and 2 to the Professional Services Agreement with KPG for services to complete final design of the the SR410 Sewer Bottleneck Phase 2.

Full Title/Motion: A Resolution Of The City Council Of The City Of Bonney Lake, Pierce County, Washington, Authorizing Amendments 1 And 2 To The Professional Services Agreement With Kpg For The Final Design Of Sr410 Sewer Bottleneck Phase 2 Project.

Administrative Recommendation: Approve

Background Summary: On October 8, 2019, Council approved a PSA with KPG to complete the design for the phase 2 of the SR410 Sewer Bottleneck. The PSA included replacement of non-compliant ADA curb ramps with compliant ramps and relocation of existing pedestrian push buttons at the 192nd Ave intersection. The original scope did not include upgrades to the pedestrian signal to current ADA standard countdown heads. Amendment 1 address the change to upgrade the current pedestrian signals. Amendment 2 addresses the storm drainage along the south side of SR410, west of 195th Ave Intersection. The street operations department has identified this section of storm control as a high priority for improvement to storm water control. KPG has given the city quotes for amendments #1 and #2 in the ammounts of \$7,011 and \$21,102 respectively.

Attachments: Resolution 2825, Amendments #1 and #2, Map

BUDGET INFORMATION

Budget Amount	Current Balance	Required Expenditure	Budget Balance	Fund Source
ADA: \$124,000.00	\$113,076.98	\$7,011.00	\$106,065.98	<input type="checkbox"/> General
Storm: \$60,000.00	\$60,000.00	\$21,102.00	\$38,898.00	<input type="checkbox"/> Utilities
				<input checked="" type="checkbox"/> Other

Budget Explanation: Eden: 301.000.042.595.30.63.20, Street Crosswalks; 415.000.038.594.39.65.01, Storm Other Improvements
Revenue Source: Sewer SDC

COMMITTEE, BOARD & COMMISSION REVIEW

Council Committee Review: Community Development *Approvals:* Yes No
Date: 17 March 2020

Chair/Councilmember	Dan Swatman	<input type="checkbox"/>	<input type="checkbox"/>
Councilmember	Michelle Keith	<input type="checkbox"/>	<input type="checkbox"/>
Councilmember	Tom Watson	<input type="checkbox"/>	<input type="checkbox"/>

Forward to: Consent Agenda: Yes No

Commission/Board Review:

Hearing Examiner Review:

COUNCIL ACTION

Workshop Date(s): Public Hearing Date(s):
Meeting Date(s): Tabled to Date:

APPROVALS

Director:
Ryan Johnstone

Mayor:
Neil Johnson Jr.

**Date Reviewed
by City Attorney:**
(if applicable)

EXHIBIT A-1

City of Bonney Lake SR 410 Sewer Bottleneck Phase II KPG Amendment 1 March 2020

INTRODUCTION

In September 2019 the City contracted KPG to provide design to upgrade undersized sewer main along SR 410 to provide sewer main capacity for future growth. This phase of the SR 410 Bottleneck Main Replacement Project will remove flow restrictions located near the intersection of SR 410 and 192nd Ave for approximately 480 feet to the east and 470 feet to the west of the center of the intersection.

Minor stormwater relocation, swale restoration, directional boring, full depth pavement and grind/inlay, and other various surface restoration features were covered under the scope of work. Spot ADA improvements were also included under final design.

Specific pedestrian and ADA elements included improvements at the intersection of 192nd Ave E and SR 410. The original scope included replacement of non-compliant ADA curb ramps with compliant ramps and relocation of existing pedestrian push buttons. The original scope did not include upgrades to the pedestrian signal to current ADA standard countdown heads.

The additional design requirement to retrofit the existing pedestrian signal heads are as follows:

- Removal of existing non-countdown pedestrian modules and replacement with new countdown modules.
- Assessment of modification of existing pedestrian signal housing.
- Wiring schedules for countdown modules to APS Push Buttons & traffic controller cabinet as required

The following Scope of Work outlines the effort required to complete Plans, Specifications, and Estimates (PS&E) for the above described improvements:

A. ASSUMPTIONS:

The following assumptions were made to establish a scope and budget for this project:

- No additional revisions to the traffic signal or controller will be required.
- No additional permitting will be required
- Special Provisions will be developed based on the 2018 WSDOT Standard Provisions.
- Plans will be developed using AutoCAD 2018 using KPG drafting standards.

SCOPE OF WORK

EXHIBIT A-1

Task 1 – Management/Coordination/Administration

This task covers the effort required to manage the additional project design elements and staffing.

1.1 Provide project administrative services including:

- QC of additional products before submittal

1.2 Provide project management services including:

- Additional Project staff management and coordination. Additional internal meetings as required

Products:

- Additional progress update and project files.

Task 7 – Pedestrian Signal Retrofit Design

This task covers the additional design effort to retrofit the existing pedestrian signal to countdown signal heads.

7.1 Pedestrian Signal Countdown Head Retrofit Design:

- Prepare plans and specifications for the removal of existing non-countdown pedestrian modules and replacement with new countdown modules.
- Provide direction for the modification of existing pedestrian signal housing.
- Develop wiring schedules for countdown modules to APS Push Buttons & traffic controller cabinet as required

Products:

- One additional plan sheet
- Wiring diagrams and notes as required
- Revisions to the project Plans, Specifications, and Estimate

Assumptions:

- No additional revisions to the traffic signal or controller will be required.

ADDITIONAL SERVICES

KPG can provide services in addition to those outlined above as requested by the City. It is assumed that additional services such as additional design elements, Bidding support, construction engineering support, construction survey, developing Record Drawings, etc. shall be covered under a separate supplemental agreement between the City and KPG.

Labor Hour Estimate							Total Hours and Labor Fee Estimate by Task	
Engineering Mgr	Project Engineer	Architecture Technician II	Documentation Specialist	Engineering Technician	Survey Crew I	Survey Crew II	Hours	Fee
Sr. Const Mgr	Project Surveyor	Design Engineer	Sr. Admin	Architecture Technician I				
Survey Mgr	Sr. Resident Engineer	Sr. CAD Technician		CAD Technician				
		Survey Technician		Transportation Planner				
210	140	117	115	100	166	216		
<hr/>								
1							1	\$ 210.00
1	2						3	\$ 490.00
1	1						1	\$ 140.00
3	2						3	\$ 490.00
	5	0	0	0	0	0	8	\$ 1,330.00
<hr/>								
2	16	18	1	8			45	\$ 5,681.00
2	16	18	1	8	0	0	45	\$ 5,681.00
5	21	18	1	8	0	0	53	\$ 7,011.00
							Total Estimated Budget	\$ 7,011.00

EXHIBIT A-1

City of Bonney Lake
SR 410 Sewer Bottleneck Phase II
KPG
Amendment 2 – Swale/Stormwater Improvements
March 2020

INTRODUCTION

This scope of work covers the effort required to complete storm drainage improvements along the south side of SR410 between the driveway at Best Tire to the west side of 195th Ave E. Specifically, these improvements are anticipated to include:

- A 24” storm drain conveyance line within the existing swale area approximately 520 LF
- ADS or PVC drainage structures in lieu of concrete standard structures
- Low maintenance check dams along regraded swale
- Regrade and restore existing swale with erosion control materials and grass
- Removal of vegetation along the south side of SR410 to allow for uniform drainage off the paved surface
- Replace existing culverts under 195th Ave E with a 24-inch culvert

The following Scope of Work outlines the effort required to complete Plans, Specifications, and Estimates (PS&E) for the above described improvements:

ASSUMPTIONS:

The following assumptions were made to establish a scope and budget for this project:

- KPG will not complete a hydraulic analysis of the project; the pipe size has been set by the City based on past observed storm events.
- These drainage improvements will be shown in a separate plan set but covered under the same set of Specifications.
- These drainage improvements will be included as separate schedules, within the contract.
- No sanitary sewer improvements/relocations will be required within the swale or crossing of 195th Ave E.
- Utility improvements, aside from those described herein, are not part of this Scope of Work.
- Any required permitting or temporary construction rights will be obtained by the City.
- ADA improvements at 195th, if required, will consist of HMA paving. No curb, sidewalk, or curb ramps will be constructed.
- Plans will be developed using AutoCADD 2018, using KPG’s standards.
- Specifications will be developed based on the 2018 WSDOT Standard Provisions.
- The design will be based on the third-party survey basemap/Civil 3D surface. No additional survey will be completed by KPG for design.
- These storm drainage improvements will be bid as part of the SR410 Sewer Bottle Neck project with separate bid schedules for the Sewer Main work, 24-inch storm line, and work within the swale, and improvements associated with crossing 195th.

EXHIBIT A-1

SCOPE OF WORK

Task 1 – Management/Coordination/Administration

This task covers the effort required to manage the additional project design elements and staffing:

1.1 Provide project administrative services including:

- Project set-up and execute agreement
- Preparation of monthly progress reports and invoices
- Maintaining project files
- Record keeping

1.2 Provide project management of project from preliminary design to final design (5 months assumed). Services include:

- Project staff management and coordination
- Prepare and update project schedule
- Schedule and budget monitoring

1.3 Design Coordination meetings with City staff:

- Attend 2 design review/coordination meetings with City staff. Budget assumes that the Consultant Project Manager and Lead Project Engineer will attend all meetings and task leads will attend meetings as required.

1.4 Provide QA/QC reviews of Design Plans, Construction Cost Estimates, and Specifications

1.5 Miscellaneous letters and phone calls

Deliverables:

- Monthly progress reports and invoices
- Meeting minutes for Consultant/City Meetings
- QA/QC of all submittal packages

Assumptions:

- Task assumes a contract duration of 2 months and 2 design meetings with the Client.

Task 4 – Utility Coordination

This task covers the additional effort required to address any identified potential utility conflicts within this new area of work. The following is a list of anticipated additional work items to be included within this task:

4.1 Franchise Utility Correspondence

- Continue conversations with current utility representative for the new area of work.
- Review record drawings provided by Utilities and identify possible utility conflicts.

EXHIBIT A-1

4.2 Potholing

- Prepare utility pot hole plan and coordinate potholing of potential utility conflicts.

Products:

- One additional pothole plan sheet
- Coordination with Franchise and City Utilities to address utility conflicts
- Notification letters and correspondence with franchise utilities.

Assumptions:

- KPG will call in the utility locate request.
- City utilities will be potholed by City crews. A minimum of 2 weeks' notice will be provided.
- Franchise utility potholes will be performed by the utility or a third-party utility locate firm at the sole expense of the utility.
- Pothole hubs/pins will be measured and record by KPG to be included in the plans.

Task 3 – Stormwater & Swale Design

This task covers the effort required to prepare final plans, specifications, and construction estimates. The following is a list of anticipated work items to be included within this task:

- 3.1 Preliminary Design: Task covers the preliminary design effort required to confirm the storm drain alignment (Vertical & Horizontal), ditch restoration cross section, check-dam types and location, and location of the 195th Crossing in sufficient detail to provide an updated construction Cost estimate.
- 3.2 Final Design: The consultant shall prepare 90% and Final Bid Documents (PS&E) for the improvements described above. The following information will be included in these final design documents:
 - Plans shall be prepared in such detail as to permit field layout and construction within a degree of accuracy acceptable to the City and in accordance with industry, City, and WSDOT standards.
 - Typical sections and details shall be provided, except for items available as standard details from the City, State, or APWA drawings. Standard details will be included as an appendix within the specification manual.
 - The Consultant will prepare specifications and submit for review at the 90% and final submittals.
 - The Consultant shall calculate quantities and prepare a construction cost estimate with each submittal, and with the bid documents.
 - The Consultant shall field review the project corridor to ensure the plans are showing an accurate representation of the proposed improvements.

EXHIBIT A-1

The estimated Sheet Count is as follows:

Sheets	90% & Final Sheet Count
Cover Sheet	1
Sheet Index, Legend, Abbreviations, and Survey Control	1
Typical Sections (Swale, paving, misc)	2
Demolition/Erosion Control, Existing Conditions/Pothole Plans (Plan/Plan)	1
Swale Plan and Profile	1
195 th Plan and Profile	1
Traffic Control Plans	1
Total	8

Products:

- 30% roll plot and storm profile
- 30% construction cost estimate
- 90% and Final Plans, Specification, and estimate

Assumptions:

- The swale retrofit will be limited to between the commercial driveway by Best Tire and 195th Ave E crossing.
- Swale restoration sheets will not require WSDOT review
- The special provisions will be written such that the City may elect to delete portions of the drainage restoration as required to meet the available funding.
- The culvert replacement at 195th will be included as a Bid Additive
- It may be necessary for luminaire poles to be held for installation of the new stormwater system.
- Any required utility relocations will be completed prior to notice to proceed being issued.
- Modification of traffic signal or Pedestrian signal will not be required.

ADDITIONAL SERVICES

KPG can provide services in addition to those outlined above as requested by the City. It is assumed that additional services such as additional design elements, bidding support, construction engineering support, construction survey, developing Record Drawings, etc. shall be covered under a separate supplemental agreement between the City and KPG.

Labor Hour Estimate							Total Hours and Labor Fee Estimate by Task	
Engineering Mgr	Project Engineer	Architecture Technician II	Documentation Specialist	Engineering Technician	Survey Crew I	Survey Crew II	Hours	Fee
	Project Surveyor	Design Engineer	Sr. Admin	Architecture Technician I			216	
	Sr. Resident Engineer	Sr. CAD Technician		CAD Technician				
		Survey Technician		Transportation Planner				
210	140	117	115	100	166	216		
	2						2	\$ 280.00
	2						2	\$ 280.00
1	2						3	\$ 490.00
2	6						8	\$ 1,260.00
	1						1	\$ 140.00
3	13	0	0	0	0	0	16	\$ 2,450.00
	6			2			8	\$ 1,040.00
	2			8			10	\$ 1,080.00
0	8	0	0	10	0	0	18	\$ 2,120.00
2	16	20	4	40			82	\$ 9,460.00
2	8	16	4	32			62	\$ 7,072.00
4	24	36	8	72	0	0	144	\$ 16,532.00
7	45	36	8	82	0	0	178	\$ 21,102.00



SR410 Storm and ADA Improvements



- Tax Parcels**
- Base Parcel
 - Condominium
 - Urban Growth Area
 - Proposed
 - Official
 - Other

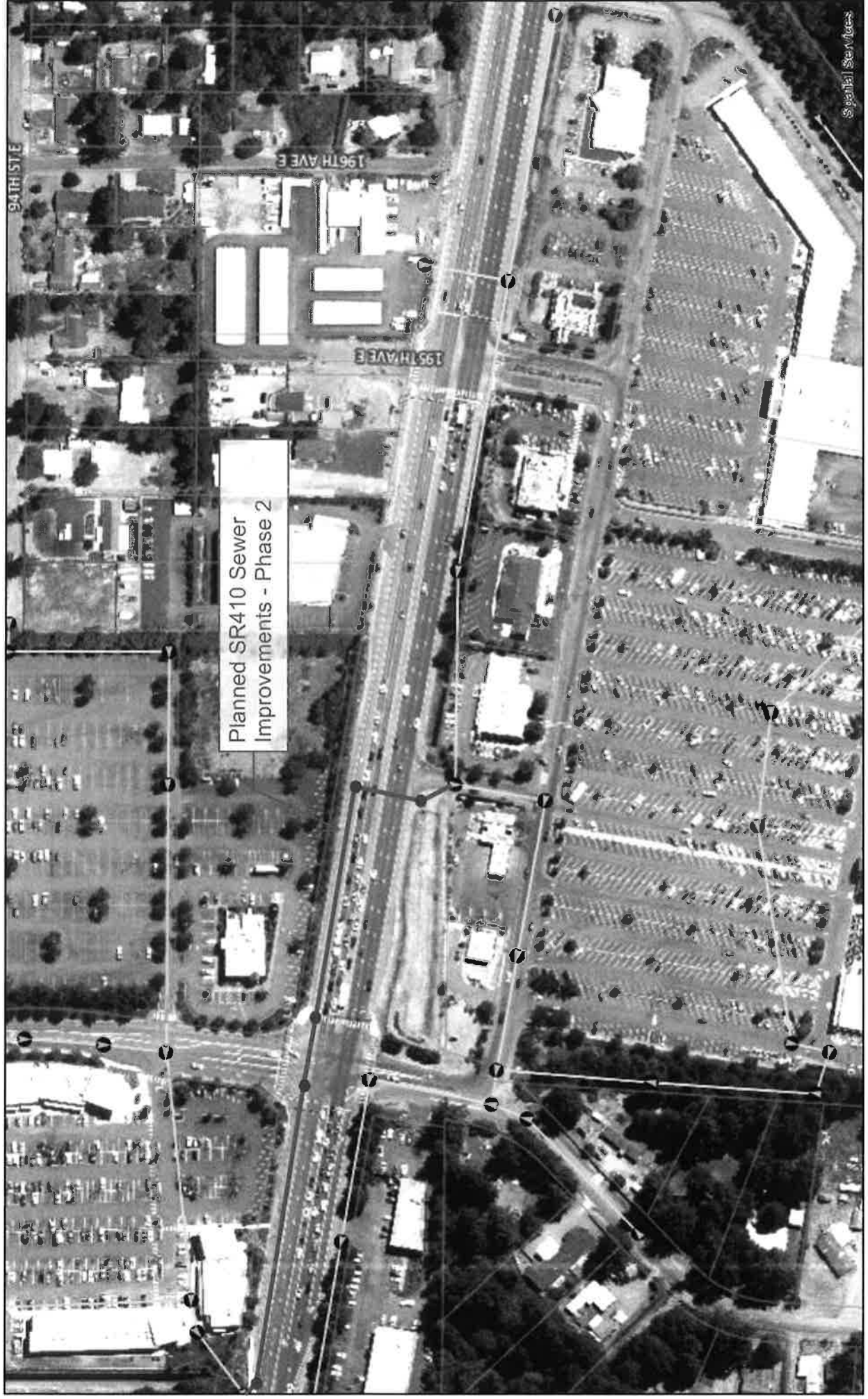


1:2,400
Date: 3/12/2020

Spatial Services



410 Sewer Bottleneck Improvements - Phase 3



Tax Parcels



Base Parcel

Other

Official

Urban Growth Area

Proposed

Sewer - Manhole - BL

1:2,400



Date: 3/12/2020