

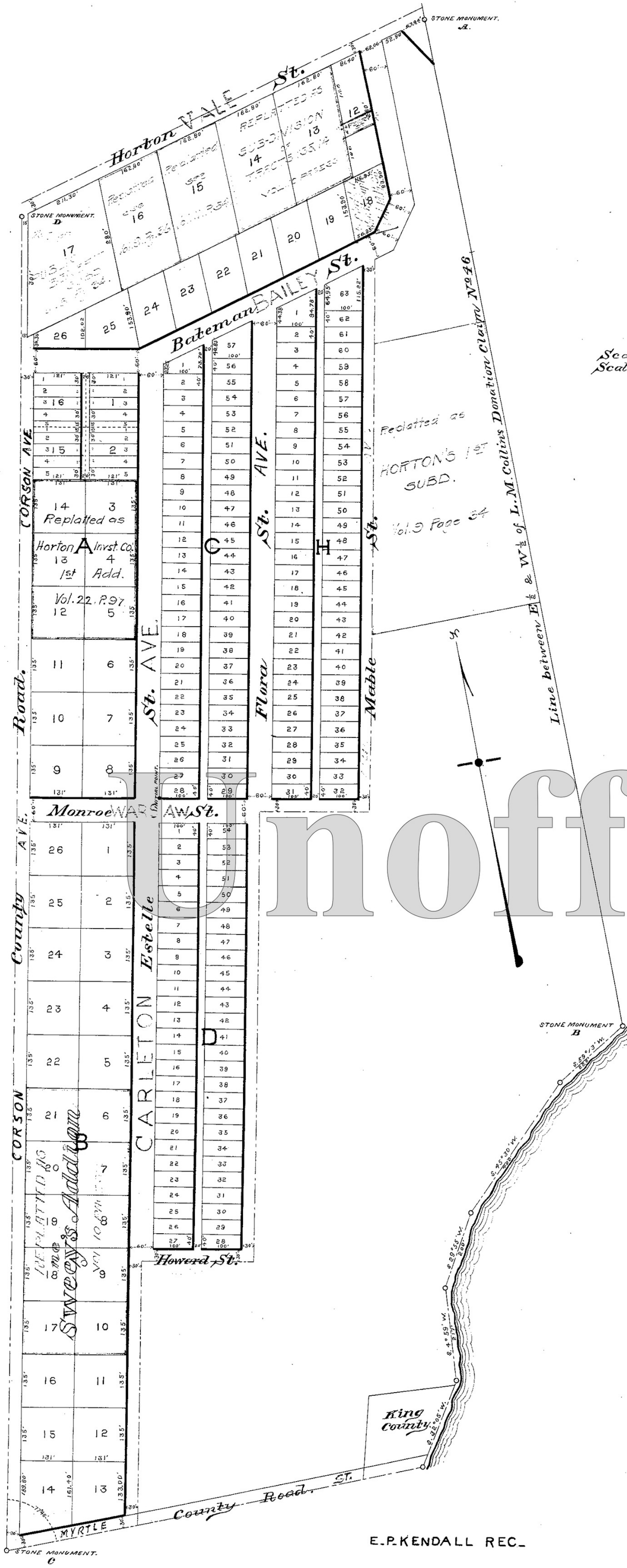
# GEORGETOWN

## KING COUNTY,

### WASH.

Scale 1 inch = 100 feet.  
Scale of record 1 inch = 200 feet.

Thomson & White, Engineers  
Rooms 19 & 20 Colman Bldg, Seattle.



### Explanation.

Georgetown comprises a portion of the East 1/2 of the West 1/2 of the L. M. Collins Donation Claim No. 46, in sections 20 & 29 1/2 Township No. 24 N. of R. 4 E. W. M. King County, Washington, Stone Monument A shown upon this plat, is a stone monument set on the division line between the East 1/2 and the West 1/2 of said L. M. Collins Donation Claim, at a point 4554 feet south of the North East corner of the West 1/2 of said claim. Stone Monument B is set where said division line intersects the shore line of the Duwamish River. Stone Monument C is set where the division line between the East 1/2 of the West 1/2 and the West 1/2 of the West 1/2 of said Claim intersects the South line of said L. M. Collins Donation Claim. Stone monument D is set on said last named division line where the same is intersected by the South line of Horton Street. The Initial point is the south West corner of Lot 28 Block C, which point is 1791 1/10 feet south of and 1047 3/10 feet West of Stone Monument A.

Blocks A & B and Tracts 12, 13, 14, 15, 16, 17, 18, 19, 20, 21, 22, 23, 24, 25 and 26 are tracts of corresponding numbers shown in a plat of the "Tracts of Julius Horton" as filed for record in the office of the Auditor of King County by the 31st day of July A. D. 1889, on page 17 of vol. 3 of Plats, and none of these tracts are in any wise affected by this plat, excepting Tract 18, and also Tracts 12, 15 & 16 in Block A. Tract 18 has been changed so that Maple Street can have a more direct outlet Northward, than it otherwise could have. Tracts 12, 15 & 16 in Block A have been subdivided into lots separated by an alley, as shown on this Plat. All dimensions are clearly indicated on the Plat.

### Dedication.

Know all men by these presents, Julius Horton and Annie E. Horton his wife, owners of the within described Townsite, do hereby dedicate to the use of the public forever all the streets and alleys shown on this plat. Witness our hands and seals this 4th day of June A. D. 1890. Signed and sealed in presence of P. F. Brinck Wm. H. Hughes } Julius Horton } Annie E. Horton }

### Acknowledgment.

State of Washington }  
County of King }  
On this 4th day of June A. D. 1890, personally appeared before me Wm. H. Hughes a Notary Public in and for the State of Washington, the said Julius Horton and Annie E. Horton his wife, known to me to be the parties named in and who executed the accompanying Dedication and Plat, and each of said persons acknowledged to me for himself and herself that they executed the same freely and voluntarily without fear of or coercion from anyone. Witness my hand and official seal the day and year first above mentioned. Wm. H. Hughes Notary Public in and for the State of Washington, residing at Seattle, Washington.



55884

Filed for record at the request of Julius Horton, June 4th A. D. 1890, at 20 min. past 3 P. M. and recorded in Vol. VI of Plats, page 9. Records of King County, Wash.

W. R. Annet  
County Auditor.

E. P. KENDALL REC.