



Key Facts

Special Edition



353.9797
WASHING
Sep
1993

Transportation Organizations and Budget Data

September 1993

Washington State
Department of Transportation
Library



**Washington State
Department of Transportation**

Finance and Budget Management Division
Financial Planning

Transportation Commission Members

Alice Tawresey

Ms. Tawresey serves as Commission Chair. She was appointed by Governor Booth Gardner in September 1990 and reappointed by Governor Mike Lowry in February 1993. Her current term will expire in June 1998.

Aubrey Davis

Mr. Davis serves as Commission Vice Chair. He was appointed by Governor Gardner in February 1992 and reappointed by Governor Lowry in February 1993. His current term will expire in June 1995.

James Henning

Mr. Henning was appointed by Governor Gardner in July 1987 and reappointed by Governor Lowry in June 1993. His current term will expire in June 1999.

Norm McKibben

Mr. McKibben was appointed by Governor Gardner in December 1988. His current term will expire in June 1994.

Connie Niva

Ms. Niva was appointed by Governor Lowry in February 1993. Her current term will expire in June 1997.

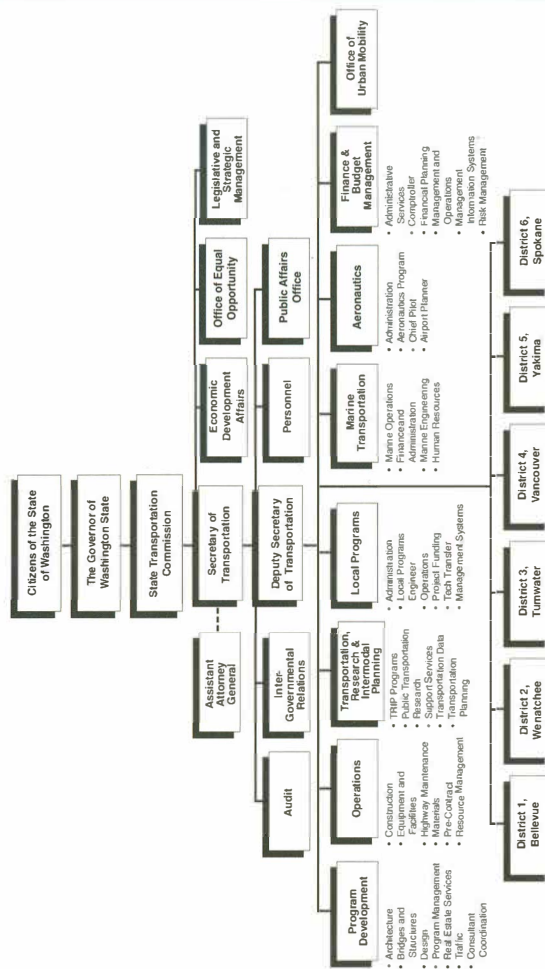
Linda Tompkins

Ms. Tompkins was appointed by Governor Lowry in February 1993. Her current term will expire in June 1996.

Larry Weldon

Mr. Weldon was appointed by Governor Lowry in February 1993. His current term will expire in June 1995.

Organization



WSDOT Budget

<i>Division/Program</i> <i>(\$ in Millions)</i>	<i>1993-95</i> <i>Budget</i>
--	---------------------------------

Program Development Division

A Non-Interstate Highway Preservation	\$300.8
B Interstate	535.2
C Non-Interstate Capacity Improvements	431.1
G Community Economic Revitalization	5.0
H Non-Interstate Bridges	117.0
R7 Reimbursable Projects	54.5
Total Program Development	\$1,443.6

Operations Division

M Highway Maintenance and Operations	\$243.4
D Highway Management and Facilities	71.9
Total Operations	\$315.3

Marine Division

X Marine Maintenance and Operations	\$237.6
W Marine Construction	269.0
Total Marine Division	\$506.6

Aeronautics Division

F Aeronautics	\$3.9
---------------	-------

Transit, Research, and Intermodal Planning

T Transit, Research, and Intermodal Planning	\$128.9
--	---------

<i>Division/Program</i> <i>(\$ in Millions)</i>	<i>1993-95</i> <i>Budget</i>
--	---------------------------------

Finance and Budget Management Division

S Transportation Management	\$54.6
R Sales and Services to Others	11.1
U Charges from Other Agencies	32.1
Total Finance and Budget Management	\$97.8

Local Programs Division

Z Local Programs	\$202.6
------------------	---------

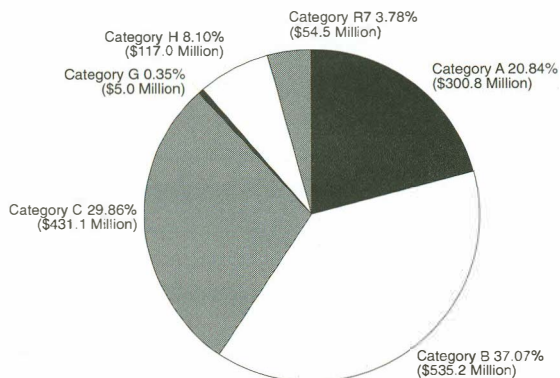
Total WSDOT Budget	\$2,698.7
---------------------------	------------------

Nonappropriated

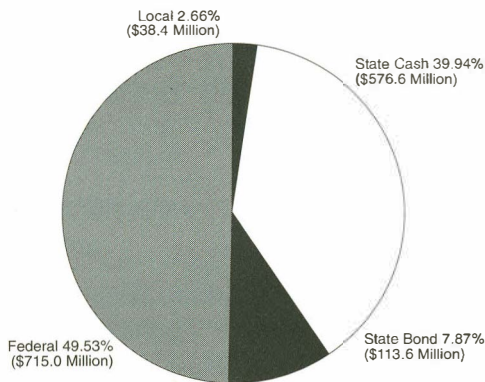
E Transportation Equipment Fund (TEF)	148.1
---------------------------------------	-------

1993-95 Highway Construction

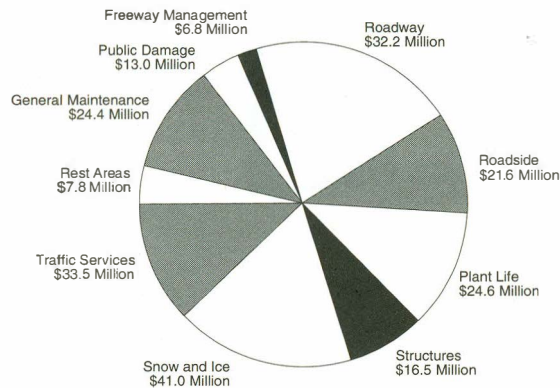
Expenditures



Revenues



1993-95 Highway Maintenance*

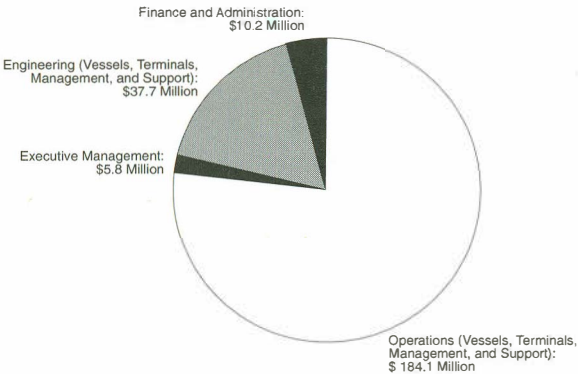


Total \$221.4 Million

*Preliminary Estimate

Marine Expenditures

Operations



Capital

